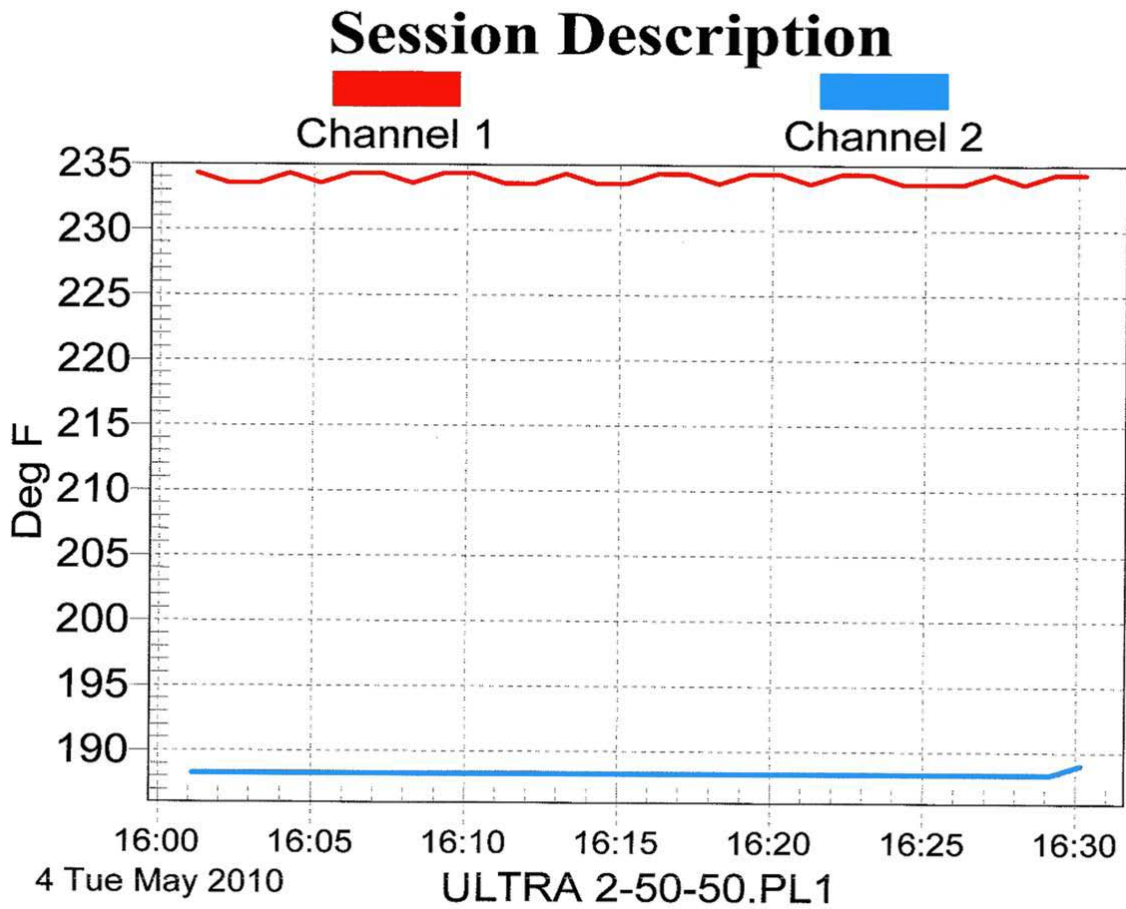




**THIS CHART SHOWS THE DIFFERENTIAL ON CONDUCTIVITY ALONE, A 7 mils COAT ON A METAL PLATE THE PLATE WAS PLACED OVER A DIGITAL HOT PLATE SET AT 235F CONSTANT TEMPERATURE (RED LINE).**

**A PAIR OF DATA LOGGER THERMO COUPLERS WERE USED TO MONITOR TEMPERATURE ON BOTH SIDES OF THE PLATE, GRAPH SHOWS 30 MINUTES TRACKING AFTER STABILIZATION, BUT THE TESTS SHOWED NO CHANGES DURING THE EIGHT HOUR RUN.**





**TimesOne™**  
The Energy Efficiency Company

**Power Correction Systems, Inc.**

1800 S. Robertson Blvd., 419

Los Angeles, CA 90035

Tel: (310) 247-4848

Fax: (310) 273-7719

Contact: [bsegal@activeharmonicfilters.com](mailto:bsegal@activeharmonicfilters.com)

URL: [www.activeharmonicfilters.com](http://www.activeharmonicfilters.com)

**EXTERIOR OF THIS MINISTRY HOUSE WAS PAINTED WITH MULTICERAMICS  
TINTED WITH CERAMICS**





**TimesOne™**  
The Energy Efficiency Company

**Power Correction Systems, Inc.**  
1800 S. Robertson Blvd., 419  
Los Angeles, CA 90035  
Tel: (310) 247-4848  
Fax: (310) 273-7719  
Contact: [bsegal@activeharmonicfilters.com](mailto:bsegal@activeharmonicfilters.com)  
URL: [www.activeharmonicfilters.com](http://www.activeharmonicfilters.com)

**INTERIOR TEMPERATURE WITHOUT CONDITIONED ENVIRONMENT (INTERIOR WAS ALSO PAINTED WITH MULTICERAMICS) SHOWS 21C (69.8F)**





**TimesOne™**  
The Energy Efficiency Company

**Power Correction Systems, Inc.**

1800 S. Robertson Blvd., 419

Los Angeles, CA 90035

Tel: (310) 247-4848

Fax: (310) 273-7719

Contact: [bsegal@activeharmonicfilters.com](mailto:bsegal@activeharmonicfilters.com)

URL: [www.activeharmonicfilters.com](http://www.activeharmonicfilters.com)

**EXTERIOR TEMPERATURE WAS CONTINUOUSLY TRACKED AND THE DIFFERENTIAL TEMPERATURE AFTER THE ONE DAY CURING TIME WAS 11C**

